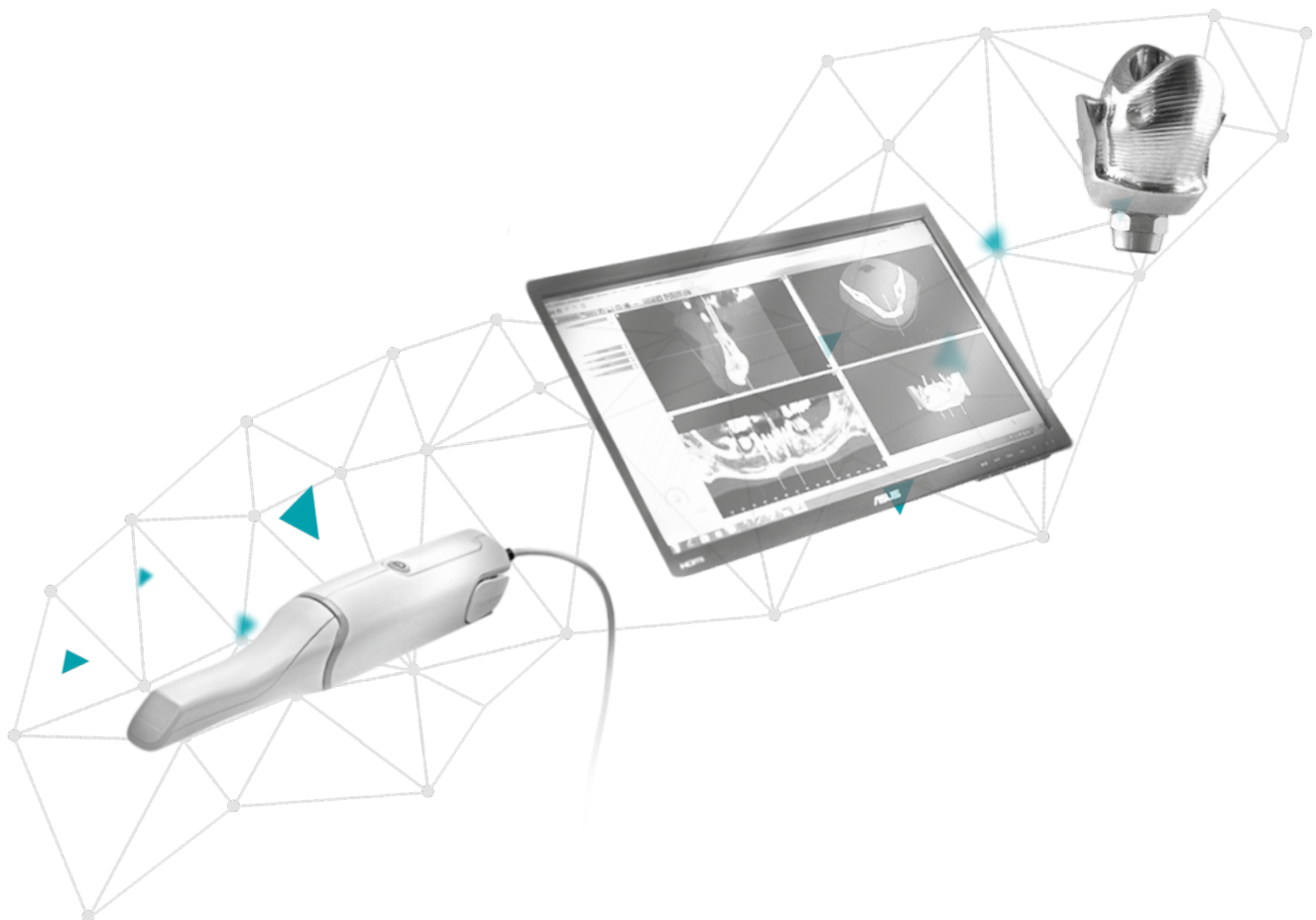




# digitals

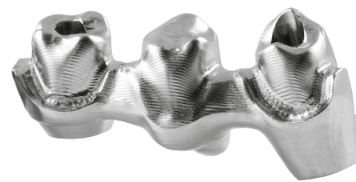
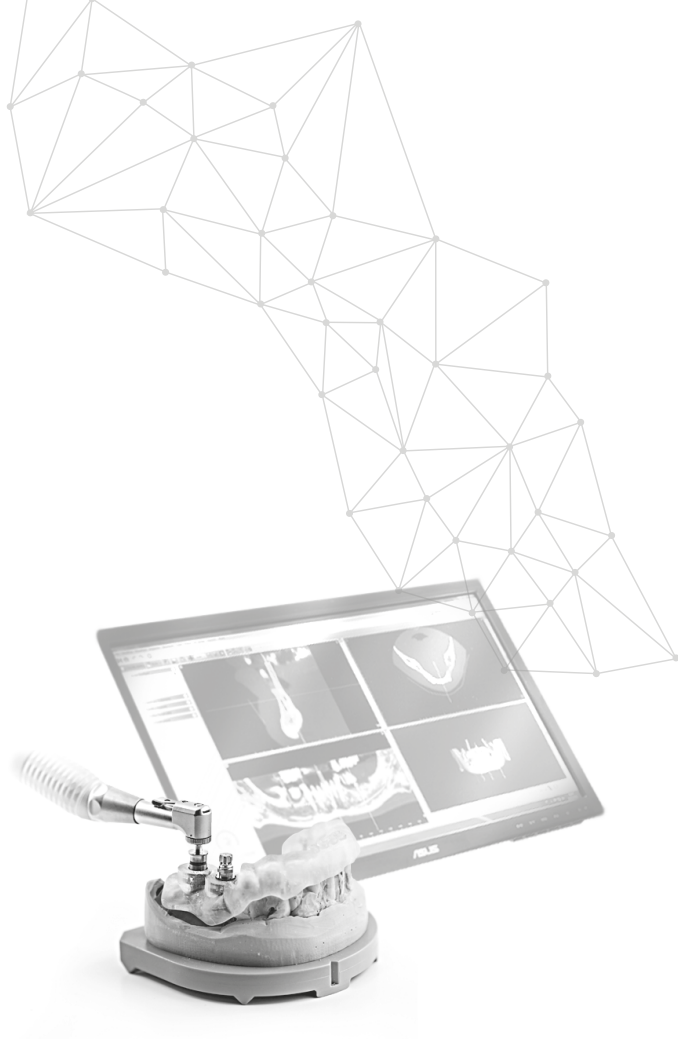
Technology beyond the implant



# Digital evolution

- ▶ Over the last few years, the dentist has seen new technologies arrive, most of which are aimed at digitalizing the various processes the dentist and laboratory face daily.

Starting from the acquisition of data, going on to the planning and performance of the treatment, up to the development of personalized devices, the final goal of these new digital technologies is to obtain an integrated workflow to better manage clinical cases and satisfy the growing requests of the patient.



## Advantages

The digital workflow has several advantages compared to traditional methods:

- it facilitates data acquisition as well as diagnostics and makes planning of the treatment more effective;
- it permits the production of prosthetic pieces in a more rapid and controlled manner;
- it determines a more predictable treatment towards success;
- it allows for better dentist-patient communication.

## Geass digital solutions

Digital impression taking



1 Plan Scan

Computer assisted Surgery



2 Geadriver

CAD-CAM  
Personalized prosthesis



3 Performa

The **digital solutions** proposed by **Geass** are in an **open system, both flexible and good value** which allows you to:

- achieve a complete digital flow;
- operate innovative technologies adaptable to any IT system;
- implement your own digital structure with versatile equipment and instruments;
- define an effective studio-laboratory workflow.

Geass is able to **offer a complete and professional service** for your investment in the digital world:

- dedicated consultancy to evaluate the clinic and laboratory's acquisition of digital technologies;
- representative demo directly in the clinic;
- operative support in the clinic and laboratory for a fast and effective learning curve;
- dedicated events and courses;
- post sales assistance in loco and remote, with a specific company department dedicated to digital technology.

With Geass digitalizing your workflow is simple and sustainable.



## 1 Plan Scan: intraoral scanning

The impression taking and occlusal registration phases are the most critical ones to perform. **Digital technology guarantees a more precise impression** for better prosthetic adaptation, eliminating manual phases in the clinic and the laboratory.

The intraoral scanner Plan Scan is **extremely straightforward to use and ensures precision results** from the single element through to entire arches. It is simply controlled by a wireless pedal, leaving the dentist's hands free to carry out scans and treatments on patients in any moment. Moreover, the data, scanned live, is constantly accessible from a computer or tablet, while the acoustic signals ensure excellent data acquisition. The digital impression achieved allows you to carry out an instant quality check. The practicality of its use and excellent workflow are guaranteed by:

- scanning without powder;
- integration into the chair;
- three different size tips, autoclavable for perfect protection from infections;
- open file format type .stl.



## ► Advantages

**Rapid scanning and reduced impression taking times and relative costs:** saving time and money.

**Elevated precision** in workflow, from scanning to the production of the CAD-CAM personalized prosthetic pieces. Appointments with the patients are more effective and there is **better communication**.



## 2 Geadrive: your coordinates

Geadrive is the **computer assisted surgery** which allows you to plan **implant success** precisely, even in cases characterized by **difficult anatomical situations**.

Geadrive allows you to carry out accurate and complete diagnoses, to plan the optimal position of the implants, design the prosthetic restoration while carrying out the intervention in total safety, thanks to:

- **Reliable software with open platform**

Geadrive can be used with the most widespread guided surgery software, among which Implant Studio - 3Shape and ModelGuide - Bionova.

- **Modular Kit and suitable instruments**

Geadrive leaves the dentist free to choose whether to be supported just in the initial phases of the intervention, with the version of the kit Start, or up to final implant placement, with the version Final of the kit (for way Milano and way Extra).

- **Personalized Guide**

The surgical guide is made based on each clinical case, following the specifications from the Geass implants' surgical protocol. With some software, for example Implant Studio, the dentist can also design the surgical guide and produce it in Geass centers using 3D printing for good value for money.



## Advantages

Excellent functional and esthetic results thanks to prosthetically guided surgery.

Greater predictability of the surgical intervention.

Single kit for the way and Kentron implant lines.

Great flexibility in the choice of the software.

Better communication with the patient.



### 3 Performa: your CAD-CAM

To create personalized prosthetic components, Geass uses Performa, an innovative solution which goes beyond the limits of current CAD-CAM production on implants.

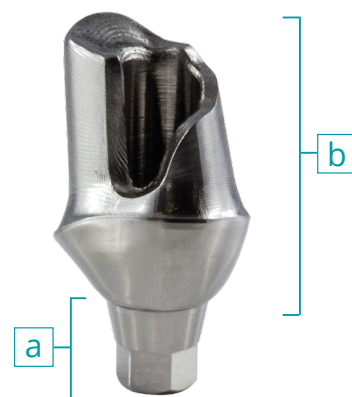
It is a **unique technology** which **integrates the advantages of milling**, used to freely reproduce the profile of the anatomical part, **with those of machining**, used to achieve precise and repeatable implant connections.

**a**

The connection has been achieved through **machining**: precision and repeatable implant to abutment coupling – identical to the industrial abutment.

**b**

The anatomical part is created through **milling**: greater freedom in the shaping and faithful reproduction of the planned profiles.



The Performa products are available with **two different surface finishes**: “Basic”, characterized by its standard surface, and “Top”, which offers you an optimized surface for the type of restoration and due to the type of material used, significantly reducing any further laboratory work.

## Advantages

No initial investment, thanks to the open system.

Better management of the soft tissues, excellent emerging profile and suitability of closure.

Precise and reliable solution at a competitive price.



# Digitals: technology beyond the implant

- ▶ Digitals is the **simple** and **inexpensive** way to get into the digital world: avant-garde equipment and pre and post sales professional service allow you to optimize your workflow and satisfy each and every need.

With Geass, digitalizing the workflow is simple and sustainable.

**Geass srl**

Via Madonna della Salute, 23  
33050 Pozzuolo del Friuli (UD) Italy  
tel +39 0432 669191 info@geass.it  
[www.geass.it](http://www.geass.it)

